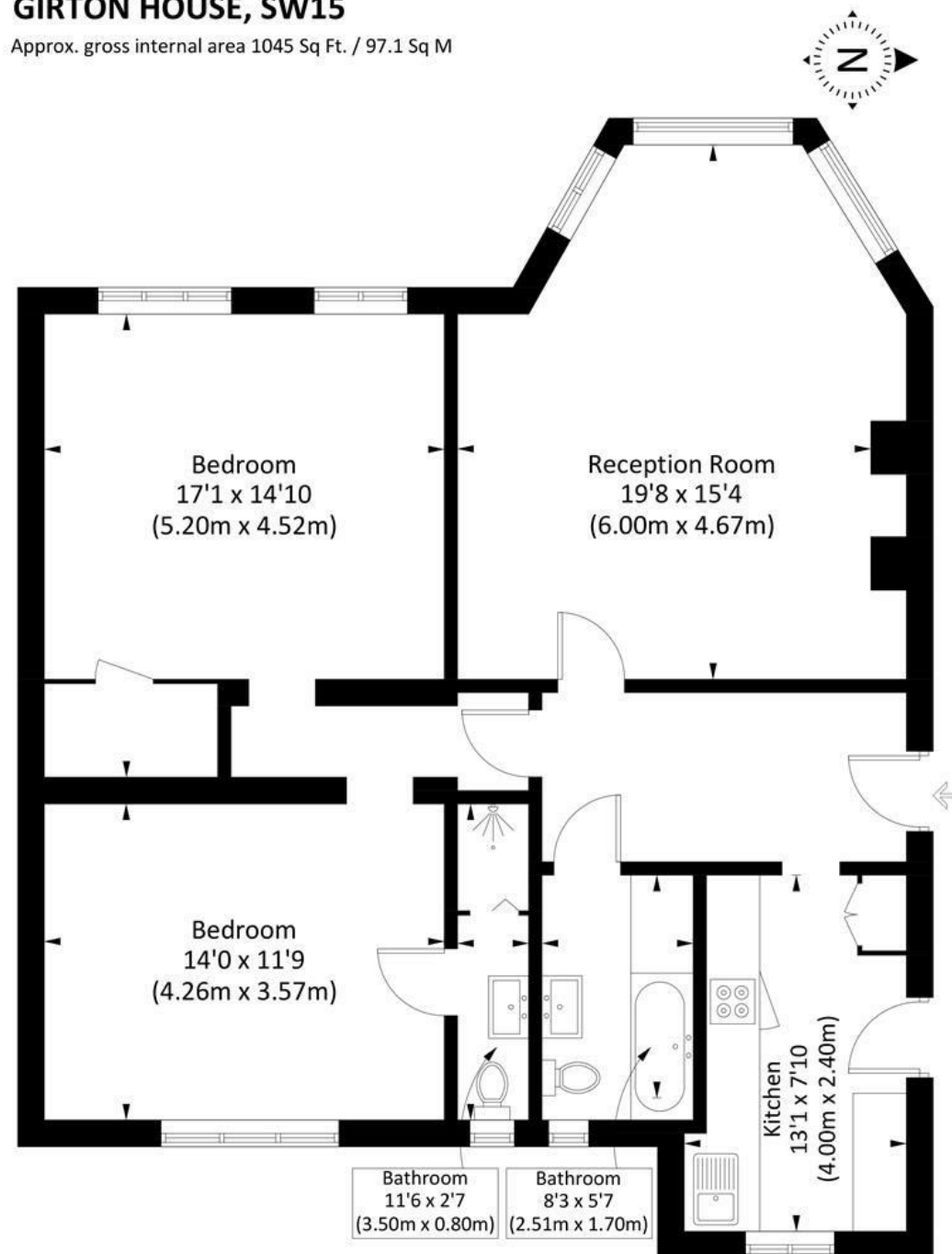


GIRTON HOUSE, SW15

Approx. gross internal area 1045 Sq Ft. / 97.1 Sq M



DISCLAIMER•These particulars are intended to give a fair and substantially correct overall description for the guidance of intending purchasers and do not constitute an offer or part of a contract. Prospective purchasers and/or lessees ought to seek their own professional advice.
•All descriptions, dimensions, areas, references to condition and necessary permissions for use and occupation and other details are given in good faith and are believed to be correct, but any intending purchasers should not rely on them as statements or representations of fact, but must satisfy themselves by inspection or otherwise as to the correctness of each of them.
•All measurements are approximate.



Girton House, London, SW15

A beautiful and fully renovated two bedroom apartment on the raised ground floor of this prestigious 1930's private development in the heart of Putney. Offered on an unfurnished basis and benefiting from acres of immaculately maintained communal grounds, off-street parking and 24hr security, the accommodation comprises an wood panelled entrance hallway, bright reception room, fitted galley style kitchen, two double bedrooms, en suite shower room and further full bathroom. Manor Fields is a highly sought after private estate perfectly located for all the amenities and transport has to offer. Available now.



- FULLY RENOVATED FLAT
- GALLEY STYLE KITCHEN
- TWO BATH/SHOWER ROOMS
- OFF-STREET PARKING
- EPC D
- RECEPTION ROOM
- TWO DOUBLE BEDROOMS
- ACRES OF COMMUNAL GARDENS
- 24hr SECURITY
- COUNCIL TAX BAND E

Per Month
£2,500 Per Month

